



BELLOTA DELIVERS

THE BEST

**PERFORMING RASPS
IN THE INDUSTRY**

 **BELLOTA**
HARD WORK INSPIRED

WITH THE MOST ADVANCED RESEARCH, PRODUCTION, CONTROLS AND TESTING, BELLOTA DELIVERS THE BEST PERFORMING RASPS IN THE INDUSTRY.

- ▲ Special Bellota Chrome Alloy Steel
- ▲ Integral Heat Treatment
- ▲ Uniform Tooth Geometry
- ▲ Exclusive Bellota Sharpening Technology
- ▲ Superior Quality Assurance Systems

A RASP FOR ALL YOUR NEEDS



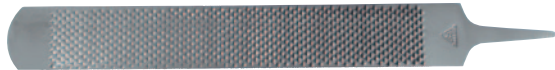
RASP SIDE

Most aggressive						▲	▲	
Very aggressive				▲	▲	▲		
Aggressive	▲	▲	▲					
Teeth/Row	8	8	8	6	6	6	8	

FILE SIDE

Coarse						▲	▲	▲
Intermediate		▲	▲		▲	▲		
Smooth								
Extra smooth				▲				
Chip Breaker	▲							▲

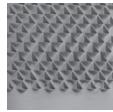
AGGRESSIVE RASP CUT



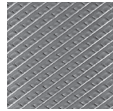
TOP LEVEL

New format, 12% wider and 10% thinner than regular rasps, for perfect leveling balance and control.

- ▲ RASP side: AGGRESSIVE (8 teeth/row) for easy cut, ideal for trimming
- ▲ FILE side: INTERMEDIATE cut for excellent and efficient finish

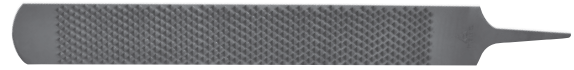


RASP SIDE



FILE SIDE

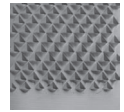
LBS	LENGTH	WIDTH	THICKNESS	PER BOX
1.4	14"	2"	3/16"	6



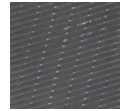
NEW PRIME LEVEL

New format, 12% wider and 10% thinner than regular rasps, for perfect leveling balance and control.

- ▲ RASP side: AGGRESSIVE (8 teeth/row) for easy cut, ideal for trimming
- ▲ FILE side based on chip breaker style for smoother finish of the outer wall



RASP SIDE



FILE SIDE

LBS	LENGTH	WIDTH	THICKNESS	PER BOX
1.4	14"	2"	3/16"	6

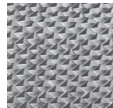
VERY AGGRESSIVE RASP CUT



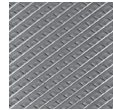
TOP SHARP

Second cut file.

- ▲ RASP side: VERY AGGRESSIVE (6 teeth/row) for quick removal of hoof material in all working conditions
- ▲ FILE side: INTERMEDIATE cut for excellent and efficient finish

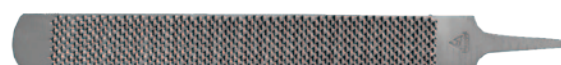


RASP SIDE



FILE SIDE

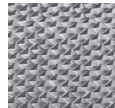
LBS	LENGTH	WIDTH	THICKNESS	PER BOX
1.4	14"	1.75"	13/64"	6



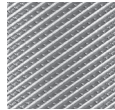
CLASSIC

Extra smooth file.

- ▲ RASP side: VERY AGGRESSIVE (6 teeth/row) for quick removal of hoof material in all working conditions
- ▲ FILE side: EXTRA SMOOTH cut, ideal for "dressing" finish



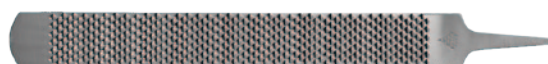
RASP SIDE



FILE SIDE

LBS	LENGTH	WIDTH	THICKNESS	PER BOX
1.4	14"	1.75"	13/64"	6

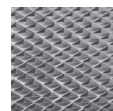
MOST AGGRESSIVE RASP CUT



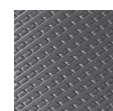
RAZOR+

Special STEEL characteristics combined for the longest durability.

- ▲ RASP side: MOST AGGRESSIVE (6 teeth/row) for the fastest removal of hoof material
- ▲ FILE side: COARSE cut for the most efficient finish in all working conditions

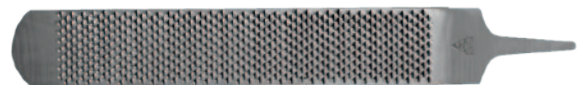


RASP SIDE



FILE SIDE

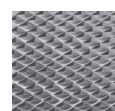
LBS	LENGTH	WIDTH	THICKNESS	PER BOX
1.4	14"	1.75"	13/64"	6



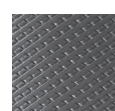
RAPTOR+

WIDE, 33% wider than regular rasps, ideal for large hooves. Special STEEL characteristics combined for the longest durability.

- ▲ RASP side: MOST AGGRESSIVE (8 teeth/row) for the fastest removal of hoof material
- ▲ FILE side: COARSE cut for the most efficient finish in all working conditions



RASP SIDE



FILE SIDE

LBS	LENGTH	WIDTH	THICKNESS	PER BOX
1.8	14"	2.25"	13/64"	6

SPECIALTY RASPS, FILES AND HANDLES

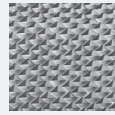


MINI

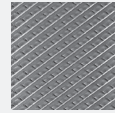
A short Top Sharp, ideal for work on ponies, foals and other small hooves. Handle included.

- ▲ RASP side: VERY AGGRESSIVE (6 teeth/row) for quick removal of hoof material in all working conditions
- ▲ FILE side: INTERMEDIATE cut for excellent and efficient finish

LBS	LENGTH	WIDTH	THICKNESS	PER BOX
0.9	10"	1.75"	13/64"	4



RASP SIDE



FILE SIDE



Files (handle not included)

- ▲ 14" Tapered Half Round Files
- ▲ 14" Flat Tapered File
- ▲ 12" Round Files
- ▲ 12" Triangular File
- ▲ 8" Round Chainsaw File 3/16 Diameter
- ▲ 6", 8" & 14" Flat Smooth



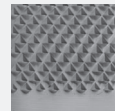
TOP LEVEL LONG

NEW

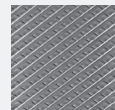
Extra-long, 3" longer than normal rasps ideal for large hooves. New format, 12% wider and 10% thinner than regular rasps, for perfect leveling balance and control.

- ▲ RASP side: AGGRESSIVE (8 teeth/row) for easy cut, ideal for trimming
- ▲ FILE side: INTERMEDIATE cut for excellent and efficient finish

LBS	LENGTH	WIDTH	THICKNESS	PER BOX
1.7	17"	2"	3/16"	6



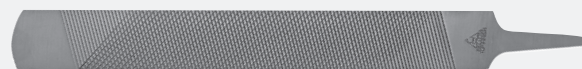
RASP SIDE



FILE SIDE



Ergonomic File Handles



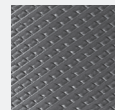
PRIME FINISH+ FILE

NEW

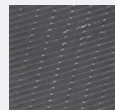
Special STEEL characteristics combined for the longest durability.

- ▲ FILE side 1: COARSE cut for the most efficient finish in all working conditions
- ▲ FILE side 2: based on chip breaker style for smoother finish of the outer wall

LBS	LENGTH	WIDTH	THICKNESS	PER BOX
1.4	14"	1.75"	13/64"	6



FILE SIDE 1



FILE SIDE 2



Twist On Rasp Handles



HARD WORK INSPIRED

VIEW PRODUCT PHOTOS, SPECIFICATIONS AND VIDEOS ONLINE AT WWW.BELLOTAFARRIER.COM



Like and Follow FPD on
on Facebook
[@farrierproductdistribution](https://www.facebook.com/farrierproductdistribution)



Follow FPD
on Instagram
[@fpdinc](https://www.instagram.com/fpdinc)



Subscribe to FPD's
Youtube channel at
[@farrierproducts](https://www.youtube.com/@farrierproducts)